

Mile High Braunvieh Sale 2011



Held In Conjunction With

105th NATIONAL WESTERN Stock Show

Wednesday • 9:00 A.M. (MT)

January 12th

In The Yards • Stockyards Arena



Mile High
Braunvieh
Sale



2011

Wednesday • 9:00 A.M. (MT)

JANUARY 12

Held In Conjunction With

105th NATIONAL
WESTERN 
Stock Show

In The Yards • Stockyards Arena

Teleconference Bidding

Those who cannot attend the sale in person can participate in the Teleconference Line to bid live as the cattle enter the Sale ring.

In order to participate you will need to pre-register with Brubaker Sales at least one (1) hour before the sale. Call 540/908-5799 to receive your buyers number, Teleconference Number and pin code to participate.

Sale Day Phones:

Ken Brubaker, 540/908-5799
Robert Segarra, 785/554-1151
Auction Block: 303/383-2542

Auctioneer: Ken Brubaker, 540/908-5799

Sale Coordinator: Robert Segarra 785/554-1151

Sale Location:

National Western Stock Show
4655 Humboldt Street, Denver, CO
In The Yards – Stockyard Arena

Terms & Conditions:

Cattle sell under the Approved Standard Terms as adopted by the Braunvieh Association of America. Terms are cash or check with proper ID. Settlement must be made on cattle prior to load out. Cattle purchased via telephone or order must be paid within 10 days of sale date.

Health:

All cattle will be accompanied by proper health certificates for immediate shipment.

Insurance:

Livestock Mortality Insurance will be available at the clerks desk through Harding & Harding Insurance.

Trucking:

Consignors, sale managers will assist buyers to provide shipping in a timely and least-cost manner. Trailers will be available heading to most areas of the country to assist buyers.

Announcements:

Announcements made from the auction block take precedence over any other material contained in materials provided for the sale.

Inspection Of Sale Offering:

Cattle will be available for inspection in the stalls "In The Yards" prior to the sale



Certificate Of Registration:

A Certificate of Registration will be transferred to the buyer at the seller's expense on all live cattle lots in the sale.

Lot Tags:

Each animal in the sale will have a Lot Tag in their ear that corresponds to the same number in the sale book.

Genetic Defects:

Albinism is a Class 2 Genetic Defect that has been found in a few Braunvieh Cattle. Any cattle in this offering suspect of carrying the gene have been DNA tested free. All cattle sell guaranteed free of this disorder.

Liability:

All persons attending the sale do so at their own risk. Consignors, Sale Management and National Western Stock Show assume no liability for injury or damage to property.

Sale Book Prepared By:

Brubaker Sales & Marketing, Homestead Graphics & Boelte-Hall LLC.

EPDs: The EPDs represented in this sale book were current at the time requested for the printing of this sale book. EPDs are recalculated throughout the year by the Braunvieh Association of America, which means the data represented in this book may change in the future.



APPROVED SALE

Braunvieh Association of America

2614 South Timberline
Fort Collins, CO 80525
Roseanne Segarra, President
785/554-8596

Marketing Agent:



Brubaker Sales & Marketing
Ken Brubaker

5815 N. Valley Pike, Harrisonburg, VA 22802
540/908-5799
ken@brubakersales.com



Dear Braunvieh Friends,

*Welcome to the inaugural **Mile High Braunvieh Sale**. This offering of Braunvieh Genetics is by far one of the best you will see anywhere in the country.*

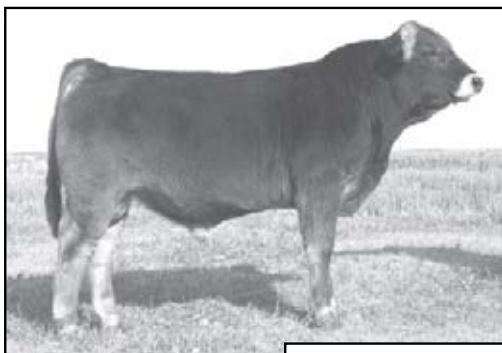
The cattle, pregnancies and embryos truly have been proven and well documented in the Breed. Everything in this sale comes with the proper credentials to vault your program to the top – Phenotype, Performance, Production – It's all there !

Please let us know if we can be of assistance. If you cannot attend the sale, we can assist you with selection, bidding or register you for the Teleconference line to bid live during the auction.



Ken Brubaker





**DRR Tidal Wave
X612 ET - Lot 1A**



**DRR OZ-MAN S144 -
Full brother to
Lots 1A and 1B**



**DRR Monsoon
X398 ET
Lot 1B**

Consigned by: Double R Ranch, Hill City, KS

DRR TIDAL WAVE X612 ET

BD: 2/27/2010 Bull PB73496 Tat: DRR X612 Polled Purebred



DRR MONSOON X398 ET

BD: 2/26/2010 Bull PB73584 Tat: DRR X398 Polled Purebred

GLB "YAHOO" ET
MR GOLDEN LINK 8140 ET
OB25422 MISS GOLDEN LINK 6228 ET

MR GOLDEN LINK G7020
MISS DOUBLE R RUBY 4145
PB40200 MISS DRR NELLIE 714

ELINO 8623-94 (8851 NAL)
TX OLIVIA 174
BAER 13758-60 SCHWARZENBERG
TX OLIVIA 174

ADMIRAL (NC) PINO 6832-43
MISS GLB 714
TLB AMOS ET
TLB POLLED KEEPSAKE

EPDS
BW
1.2
WW
14
YW
24
MILK
0

- **Selling Choice, Lot 1A & Lot 1B, Flush Brothers – Selling 3/4 Interest & Full Possession**
- This is an exciting opportunity to acquire proven value in your next Polled Herd Sire.
- Their full brother, "OZ-MAN", is the #7 Trait Leader for WWEPD and has produced top-selling progeny and test winners throughout the country. He has been a leading AI Sire and the sire of DRR Jesse James W611, the 2010 Show Bull Of The Year and herd sire at Broken Oak Ranch, Seguin, TX. Both large and small programs have utilized "OZ-MAN" to add muscle, moderate birth and functional females.
- Their Donor Dam, "Ruby 4145", has been a prolific Donor and top-producing cow with a weaning ratio of 6 @ 105. A flush of this Donor was selected by Mystic Hill Farm, Culpeper, VA in the 2010 Texas Memorial Sale at \$3,900. She has established herself as one of the true great cows in the breed.
- Maternal sibs to these bulls include the \$5,000 DRR Chica R144, selected by Broken Oak Ranch at the 2006 National Sale, and, DRR Quixote U144 one of the top indexing bulls in the Green Springs Bull Test. A full sister, DRR Ruby Tew T144 was selected in the 2008 National Sale by Diamond H Ranch, Childress, TX at \$3,000.
- These bulls come to you well proven and documented as Herd Sire prospects with proven pedigree, performance and production credentials.





MHF XEROX X002 - Lot 2

Consigned by: Harvester Farm and Mystic Hill Farms

MHF XEROX X002



BD: 2/1/2010 Bull PB72603 Tat: MHF X002 Polled Purebred

E L CONQUISTADOR

RISS (NC) FABIAN 9937-11

GLB POLLED PLUS 5003 (NC) ET

ERLE 12832-34 WADENSWIL

PB10650

MISS CJM Z011

SAMPSON

MISS CJM 807X

MHF RENOVATION R575 (NC) ET

MHF NEW ERA N315

MHF U850

MHF M230 ET

PB67089

MISS GOLDEN LINK 2530

MR GOLDEN LINK "TONY" ET

MISS GOLDEN LINK 9087

EPDS
BW
-3.8
WW
-6
YW
-2
MILK
-1

➤ Selling half interest

- This **Homozygous Polled** son of "Polled Plus" has great potential as a calving ease sire with an actual birth weight of 70# and a -3.8 BWE PD.
- His dam was the top-selling female in the Spring 2009 Mystic Hill Farms Sale and is an exceptional female with "Xerox" being her first calf with a 205-Day Wt 636# to Ratio 102.
- A real Herd Sire Prospect that blends proven gene pools with above average predictability. "Polled Plus", "New Era" and "Tony" all combine to give him the credentials to be a rising star in the breed.



MR HLJ NITRO - Lot 3

Consigned by: J-D Farms, Wymore, NE

MR HLJ NITRO



BD: 3/24/2010 Bull PB73947 Tat: HLJ X030 Polled Purebred

RCB BLACK UNO ET

GLB POLLED EAGLE

BLACK ICON H27 ET

MISS RCB C302

PB25994

MIDNIGHT DREAM

MR DTS C313

MISS DTS A146

MARKUS (NC) ROLF 16004-36

PASSGAL 5995-200 LEHN

MISS DARCY

BERNA 4990-294 OBERRIET

PB46469

MISS SFF PENNY

MR. GOLDEN LINK 2605 ET

MISS BDE COWMAKER 63A

EPDS
BW
-0.2
WW
-4
YW
-4
MILK
-4

➤ Selling 3/4 interest and full possession

- This Polled Herd Sire Prospect is an own son of the legendary foundation Sire, "Black Icon".
- He is a powerful individual loaded with performance with a 205-Day WT 840#.
- His extra rib and volume comes as no surprise with a pedigree that blends in "Markus" from his dam.
- Halter broke and docile this bull should serve the purebred or commercial breeder well with moderate birth weight and pounds heavy calves. Actual BW 87#





MISS BBB 1006 - Lot 4

Consigned by: **Big Blue Braunvieh, Pickrell, NE**

MISS BBB 1006



BD: 2/5/2010 Cow PB73772 Tat: BBB 1006 Polled Purebred

DRR OZ-MAN S144
DRR WIZARD OF OZ U570
 PB64363 MISS DRR ARIEL R730

MR GOLDEN LINK 8140 ET
 MISS DOUBLE R RUBY 4145
 PFI MATTS IMAGE N309
 MISS DRR CLAUDIA 727

EPDS
BW
-0.5
WW
11
YW
16
MILK
-2

MR DLT 205
MISS BBB 810
 PB67324 MISS RB NUGGET 231M

POLLED BLACK FLASH ET
 MS DLT 956 DURABLE LADY
 MR GOLDEN LINK 0411
 MISS 737 UTAH 929J

➤ **Sells Open**

- Polled Purebred heifer that blends "OZ-MAN" with the predictability of "MR DLT 205".
- Produced from an exceptional 2-year old that did an outstanding job with this heifer as she posted a 205-Day WT 603# to ratio 110.
- Low-birth weight genetic expression with an actual BW 70# and BWE PD -0.3 with loads of pre and post weaning growth as expressed in her EPD footprint.



MISS BBB 1004 - Lot 5

Consigned by: **Big Blue Braunvieh, Pickrell, NE**

MISS BBB 1004



BD: 1/25/2010 Cow PB73771 Tat: BB 1004 Polled Purebred

DRR OZ-MAN S144
DRR WIZARD OF OZ U570
 PB64363 MISS DRR ARIEL R730

MR GOLDEN LINK 8140 ET
 MISS DOUBLE R RUBY 4145
 PFI MATTS IMAGE N309
 MISS DRR CLAUDIA 727

EPDS
BW
-1.0
WW
2
YW
18
MILK
0

MR DLT 205
MISS BBB 806
 BC67322 PERFORMANCE ONLY

POLLED BLACK FLASH ET
 MS DLT 956 DURABLE LADY
 MR DLT MONEYLINE
 COMMERCIAL COW

➤ **Sells Open**

- Black, Polled Purebred heifer that is another daughter of the Big Blue herd sire, "Wizard of Oz".
- A powerful deep rib heifer that expresses low-birth genetics with an actual BW 66# and BWE PD of -1.0.
- From a 2-year old daughter of "MR DLT 205" known for black, low-birth progeny with exceptional performance and show ring style and class.





KDG MS XCELLENT X000 - Lot 6A

Consigned by: Blue Feather Ranch, Kiowa, CO

KDG MS XCELLENT X000



BD: 3/24/2010 Cow PB74350 Tat: KDG X000 Polled Purebred

BRG POLLED APACHE ET
BONINA PHENOMENAL 9902 ET
 PB26474 BNL BONINA PHENOMENON

CONCORDE -B7250-
 DKD MARQUE CUT 4212D
 SILVER BULLET 5549
 MISS SAMIRAL OF PFI C340

EPDS
BW
-1.0
WW
-1
YW
2
MILK
1

KDG KIOWA MAGNUM 44P
KDG KIOWA SARAH S660
 OB57792 KDG KIOWA PRISCILLA P444

SWISS-WAY YUKON
 KDG KIOWA GABRIELLA G772
 SWISS-WAY YUKON
 KDG DOVE OF 2P D457 ET

- **Sells Open - Buyers Choice between Lot 6A and 6B**
- This Polled "Bo" daughter blends the maternal power of her sire with "Magnum" and "Yukon" into an attractive feminine design with loads of volume and fleshing ability.
- A 3/4 sister to Lot 6B, she is sired by the Breed Trait Leader for YWEPD, "BO", who is known for his exceptional hard working females that thrive in multiple environments throughout the country.
- Actual BW 92#, 205-Day Wt 599#. Exceptional performance and style in this heifer.



KDG MS XCELLENT X001 - Lot 6B

Consigned by: Blue Feather Ranch, Kiowa, CO

KDG MS XCELLENT X001



BD: 3/8/2010 Cow PB74351 Tat: KDG X001 Polled Purebred

BRG POLLED APACHE ET
BONINA PHENOMENAL 9902 ET
 PB26474 BNL BONINA PHENOMENON

CONCORDE -B7250-
 DKD MARQUE CUT 4212D
 SILVER BULLET 5549
 MISS SAMIRAL OF PFI C340

EPDS
BW
0.3
WW
6
YW
20
MILK
2

KDG KIOWA MAGNUM 44P
KDG KIOWA SARAH S661
 OB57787 KDG KIOWA MARY N334

SWISS-WAY YUKON
 KDG KIOWA GABRIELLA G772
 SWISS-WAY YUKON
 KDG BETHANY B2220 ET

- **Sells Open - Buyers Choice between Lot 6A and 6B**
- Another Polled "Bo" daughter the blends the same pedigree as Lot 6A with "Magnum" and "Yukon" in the tabulation.
- A 3/4 sister to Lot 6A she exhibits the same quality in her high volume, easy fleshing and feminine design.
- Actual BW 78#, 205-Day WT 577#. Take your pick of these exceptional heifers that blend proven gene pools with performance and flawless phenotype.





KDG KIOWA WHISPER W991 - Lot 7

Consigned by: Blue Feather Ranch, Kiowa, CO

KDG KIOWA WHISPER W991

BD: 3/12/2009 Cow PB70186 Tat: KDG W991 Polled Purebred



BRG POLLED APACHE ET
BONINA PHENOMENAL 9902 ET
 PB26474 BNL BONINA PHENOMENON

KDG KIOWA MAGNUM 44P

KDG KIOWA SARAH S661
 OB57787 KDG KIOWA MARY N334

CONCORDE -B7250-
 DKD MARQUE CUT 4212D
 SILVER BULLET 5549
 MISS SAMIRAL OF PFI C340

SWISS-WAY YUKON
 KDG KIOWA GABRIELLA G772
 SWISS-WAY YUKON
 KDG BETHANY B2220 ET

EPDS
BW
0.7
WW
8
YW
15
MILK
1

- **Sells AI Bred 11/7/10 to Vista 4Z Foresight 307S**
- This bred heifer is a high performing "Bo" daughter bred the same as Lot 6A and 6B blending "Magnum" and "Yukon" into the tabulation to create a well balanced, volumes broody female that is sure to add value to any program.
- She combines moderate BW with an actual BW of 86# with an impressive 205-Day WT 667# putting her at the top of the replacement heifer pen at Blue Feather.
- The mating to "Foresight" adds another level of proven time-tested gene pools adding "Basic Beef" and "Pure Chrome" to the pedigree.



BLC GYPSY 023X - Lot 8

Consigned by: Brink Livestock, Piedmont, KS

BLC GYPSY 023X

BD: 3/5/2010 Cow PB72690 Tat: BLC 023X Polled Purebred



EL MATADOR PFI C305 ET
PFI "WALKER" J915
 PB27626 MISS SAMIRAL OF PFI B270

SILVER BULLET 5549

MISS 23
 PB42724 MISS LLB H883

E L CONQUISTADOR
 MISS GLB "MERCEDES" 1588
 GOLDEN LINK 937
 PFI MISS SAMBO W750

GLB POLLED EAGLE
 MISS GOLDEN LINK 2528
 JK TEXAS GOLD
 MISS LLB 83

EPDS
BW
0.9
WW
12
YW
17
MILK
0

- **Sells Open**
- A Polled very attractive daughter of the Breed Trait Leader, "Walker", from Brink Livestock.
- This heifer stacks the deck in value blending pedigree, performance and maternal superiority to afford you not only a show heifer prospect but a future top-producing brood matron.
- She comes from the top of the replacement pen with her wide base and deep rib. Her dam has been one of the exceptional cows in the program with a progeny weaning ratio of 5 @ 104.
- Her EPD expression places her at or above breed average across the board.
- Actual BW 92#, 205-Day WT 575#, Ratio 100





C FARMS MISS 0757 - Lot 9

Consigned by: C Farms, Vinton, IA

C FARMS MISS 0757



BD: 2/23/2010 Cow PB73666 Tat: CFQB 757X Horned Purebred

C FARMS MR 5258
C FARMS MR CRIMSON 8468
 PB65973 C FARMS MISS OCTOBER 3227

MR GOLDEN LINK 6193ET
 C-FARMS MISS MADDIE 101M
 MR GOLDEN LINK 1516
 MISS GLB 0560

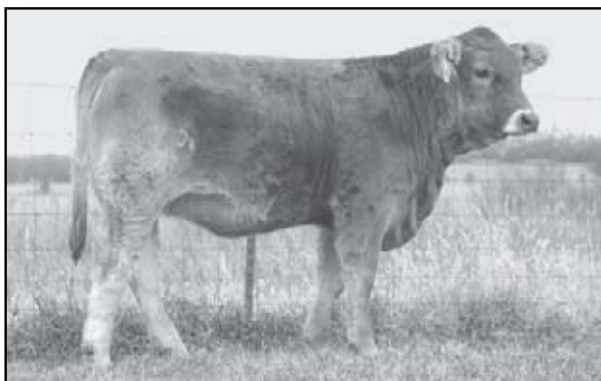
EPDS
BW
3.0
WW
17
YW
21
MILK
4

GLB EASY EYE F6705 ET
C-FARMS MISS 102M
 PB43026 MISS GLB 9807

RISS (NC) FABIAN 9937-11
 ERLE 12832-34 WADENSWIL
 MR GOLDEN LINK 5165 ET
 MISS LLB E517

➤ **Sells Open**

- The first of two "Crimson" daughters offered by C Farms.
- "Crimson" was the top feed conversion bull at the 2009 Green Springs Test and scanned a REA of 1.50/cwt. He blends the legendary "Spittin Image" with a dam that is a paternal sister to "James Bond" the \$10,000 top-selling bull in the 2009 National Sale.
- This heifer rises to the top of the replacement pen with a 205-Day Wt of 634# to ratio 108.
- She blends above average growth as evidenced by her WW and YW EPDs with a dam that has risen to the top of the program with an impressive progeny weaning ratio of 105 on 3 head.
- A balanced heifer with growth, performance, carcass and maternal power.



C FARMS MISS 0674 - Lot 10

Consigned by: C Farms, Vinton, IA

C FARMS MISS 0674



BD: 4/5/2010 Cow PB73759 Tat: CFQB 674X Horned Purebred

C FARMS MR 5258
C FARMS MR CRIMSON 8468
 PB65973 C FARMS MISS OCTOBER 3227

MR GOLDEN LINK 6193ET
 C-FARMS MISS MADDIE 101M
 MR GOLDEN LINK 1516
 MISS GLB 0560

EPDS
BW
1.1
WW
16
YW
24
MILK
7

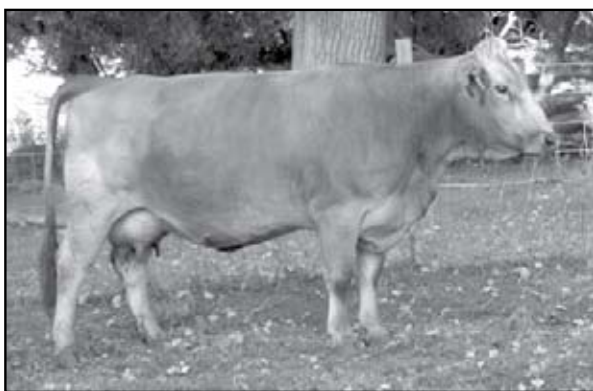
MR GOLDEN LINK 1516
C FARMS MISS 3231
 PB47075 MISS GLB 9807

MR GOLDENLINK"RISSON"8917 ET
 MISS GOLDEN LINK 9501 ET
 MR GOLDEN LINK 5165 ET
 MISS LLB E517

➤ **Sells Open**

- A 7/8 sister to Lot 9 blending "Spittin Image", "1516", "Risson" and "Gold Nugget".
- Her sire has been an exceptional consistent herd sire with 13 progeny recorded with an average weaning ratio of 103. He was the top feed conversion bull in the 2009 Green Spring Test and scanned a REA of 1.50/cwt.
- Her dam is one of the cows that everyone finds in the C Farms program with a progeny Weaning Ratio of 107 on 5 head and a marbling ratio of 105 on 2 head.
- Explosive growth and power bred into this heifer with superior maternal power to give her the credentials to become a great one.





MS POL BLAC 601M - Dam of Lot 11

Consigned by: Diamond N Braunvieh, Hastings, NE

DIA N HANNAH 2X ET



BD: 4/7/2010 Cow ?74537 Tat: DIA 2X Polled Purebred

GLB SAM 627 ET
RTR PAPPA GENE H217
 OB26003 S L REVOLUCIONARIA

SAMBO (NC) JORDI 8240-94
 ERLE 12832-34 WADENSWIL
 NR NORMAN MILOR 40X B5501
 S L UELI MUNECA

EPDS
BW
-1.8
WW
8
YW
16
MILK
1

MR RIVER HILLS K5602 ET
MS POL BLAC 601M
 PB50185 MISS SRI E101

MR GOLDENLINK "RISSON" 8917 ET
 MISS GOLDEN LINK H8135
 MR MUSCLE MAN
 MISS SAMIRAL OF PFI A132

➤ **Sells Open**

- From the top of the replacement pen at Diamond N Ranch an own daughter of the Breed Trait Leader, "Pappa Gene".
- She stems from the highly regarded "Samiral" cow family at Pella Farms and from a dam who is considered to be one of the top cows in the Diamond N program.
- Maternal brothers to this heifer were tested at Green Springs and tested well for low RFI and above average ADG.
- Actual BW 83#



ERR 1515 - Lot 12

Consigned by: End Of Road Ranch, Yuma, CO

ERR 1515



BD: 4/4/2010 Cow BC74210 Tat: ERR 1515 Polled Beefbuilder

MR GLB 6518
JMCB MR GOLDEN RULE 804U
 OB65086 BRG GOLDY K461

MR GOLDEN LINK "TONY" ET
 MISS GOLDEN LINK 8581 ET
 SWISS-WAY YUKON
 BRG DESIN F993

EPDS
BW
0.9
WW
14
YW
20
MILK
-1

ANGUS BULL
MISS MIDNITE PFI R505
 BN55545 MISS POL PEL OF PFI N320

MR PELLA OF PFI K005
 MISS POWERBALL PFI K012

➤ **Sells Open**

- This Polled Certified Beef Builder heifer is ideal to add performance and black to your program.
- A feminine growthy heifer that smashed the scales at weaning with a 205-Day WT 636# to ratio 105.
- Her dam was a top pick in the 2008 Braunvieh Spotlight Sale and traces to a paternal sister to the \$15,250 "Western Union".
- Exception pre and post weaning growth well above breed average as expressed in her WW and YW EPDs.





FR BO'S EXCALIBAR W9183 - Lot 13

Consigned by: The Freeman Ranch, Yoder, CO

FR BO'S EXCALIBAR W9183



BD: 10/6/2009 Cow PB72965 Tat: FR W9183 Polled Purebred

BRG POLLED APACHE ET
BONINA PHENOMENAL 9902 ET
 PB26474 BNL BONINA PHENOMENON

BRI L40
MISS FR EXCALIBAR P430
 PC51416 J 15 SWEETY

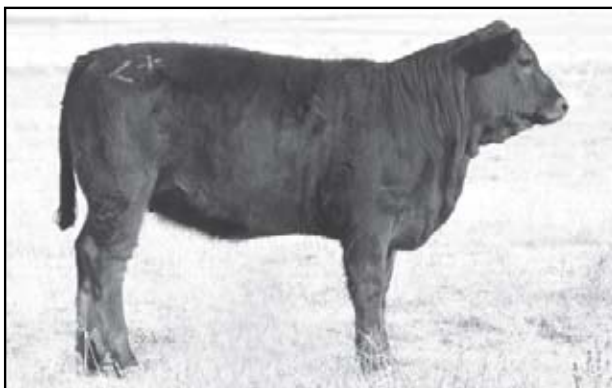
CONCORDE -B7250-
 DKD MARQUE CUT 4212D
 SILVER BULLET 5549
 MISS SAMIRAL OF PFI C340

KEYS IDOL 402F PLD ET
 BRI ROBERTA ET
 SBI EXCALIBUR F14 ET
 COMMERCIAL COW

EPDS
BW
0.0
WW
6
YW
15
MILK
-1

➤ **Sells Open**

- An exceptional "Bo" daughter that traces to "Excalibur" on the dam's side.
- This heifer, out of a 2-year old, has performed at the top of the program and is hard to part with as she smashed the scales to ratio 101 at weaning and carries a 365-day WT of 754# in the harsh environment of Southeast Colorado.
- Consistency of kind and pedigree bred into this heifer to give her the credentials to become a highly valued cow in any program.



FR MISS ISATOPE X67 - Lot 14

Consigned by: The Freeman Ranch, Yoder, CO

FR MISS ISATOPE X67



BD: 4/8/2010 Cow PB73062 Tat: FR X67 Polled Purebred

MR RIVER HILLS K9668 ET
FR URANIUM U28 [7/8]
 BC66224 AAA MISS ERICA 19L

GLB POLLED IMAGINATION ET
FR MISS SAKINA S6100
 PB60478 K143

MR GOLDENLINK"RISSON"8917 ET
 MISS GOLDEN LINK H8135
 EL MATADOR PFI C305 ET
 PFI MISS SAMBO D408

MR GOLDEN LINK 1538
 MISS GOLDEN LINK 7406 ET
 E L CONQUISTADOR
 KKB G143

EPDS
BW
-3.6
WW
2
YW
4
MILK
2

➤ **Sells Open**

- She hails from a top-producing cow family and affords you performance and carcass quality to add true value to your program.
- She blends low-birth genetic expression with an actual BW 70# and BWEPPD of -3.6 with a 205-Day WT of 599# to Ratio 101 in the highly competitive Freeman program.
- Her dam is an exceptional cow with a progeny weaning ratio of 105 on 2 head.
- Note the pedigree that backs up the value in this heifer blending "Risson 8917", "El Matador", "1538" and "El Conquistador".





MISS CHEYENNE X02 - Lot 15

Consigned by: **H & E Braunvieh, Hoisington, KS**

MISS CHEYENNE X02



BD: 3/14/2010 Cow OB73239 Tat: HER X02 Horned Fullblood

JMCB EL PRESIDENTE

OB60141 MISS GOLDEN LINK 2515

C FARMS MR 5258

MR GOLDEN LINK 6193ET

C-FARMS MISS MADDIE 101M

MR GOLDEN LINK "TONY" ET

MISS GOLDEN LINK 9563

SBI EXCALIBUR F14 ET

SAMBO (NC) JORDI 8240-94

MISS GLB 814 ET

SILVERWOOD DRAGON 4Y

LBB QUEEN V ET

SSB MISS LENA

OB47505 SSB MISS GINA ET

EPDS
BW
0.8
WW
11
YW
17
MILK
1

➤ **Sells Open**

- Fullblood heifer by the #4 REAEPD Trait Leader "El Presidente"
- If not for health reasons, Harland Rupp would not be offering these heifers for sale, as they are truly at the very top of his "keeper" pen.
- She blends the genetic consistency and proven bloodlines of "Spittin Image", "Tony", "Excalibur" and "Silverwood Dragon" to create a top performing heifer that is flawless in her cow design.
- She carries a moderate actual BW of 82# with a top-performing weaning WT 653# to ratio 101.
- Igenity© Profile results include Tenderness 7, Marbling 6, %choice 6, YG 7, Stayability 7 and BVD Free.
- Exceptional opportunity to add real Fullblood value to your program here.



MISS CHEYENNE X03 - Lot 16

Consigned by: **H & E Braunvieh, Hoisington, KS**

MISS CHEYENNE X03



BD: 3/14/2010 Cow OB73239 Tat: HER X02 Horned Fullblood

JMCB EL PRESIDENTE

OB60141 MISS GOLDEN LINK 2515

C FARMS MR 5258

MR GOLDEN LINK 6193ET

C-FARMS MISS MADDIE 101M

MR GOLDEN LINK "TONY" ET

MISS GOLDEN LINK 9563

JJJ KEYSTONE

SILVERWOOD DRAGON 4Y

MS TLC ANN H8222

DADO 11727 HEINZENBERG

MISS SCS 350 ET

M426

OB43526 MS TLC DANA E5426 ET

EPDS
BW
3.1
WW
12
YW
18
MILK
1

➤ **Sells Open**

- Another top Fullblood daughter of the #4 REAEPD Trait Leader "El Presidente".
- As in Lot 15, this is a foundation female that would not be available if not for Harland's health concerns. She is truly a breed leading female as her 3/4 sister and has great potential as a brood matron.
- Balanced and above breed average EPD expression with individual performance that smashed the scales at weaning with a 205-Day WT 682# to Ratio 106 in her contemporary group.
- Her dam has been a good one with a progeny weaning ratio of 103 on 3 head and blends the proven propensity of notable sires "Silverwood Dragon" and "Dado".
- Igenity© Profile results include Tenderness 6, Marbling 5, % Choice 5, YG 6, REA 6, Stayability 6 and BVD Free.





DIMPLES - Lot 17

Consigned by: L & C Farms, New Market, IA

DIMPLES



BD: 3/19/2010 ?74143 Tat: LCF 018 Horned Fullblood

JMCB EL PRESIDENTE
OB60141 MISS GOLDEN LINK 2515

C FARMS MR 5258

MR GOLDEN LINK 6193ET
C-FARMS MISS MADDIE 101M
MR GOLDEN LINK "TONY" ET
MISS GOLDEN LINK 9563

EPDS
BW
1.9
WW
12
YW
18
MILK
2

SAGE HILL KATIE
OB33115 MISS GLB KATRINA 1526 ET

GLB EXCITER 404 ET

BAER 13758-60 SCHWARZENBERG
MIRIAM 9707-273
GRANAT (NC) MAX 14238-21
MARGA 14223-21

➤ **Sells Open**

- Fullblood heifer blending the Trait Leading "El Presidente" with a dam by "Exciter"
- Deep ribbed high volume heifer that has the credentials to become a great one.
- Balanced EPD expression that is positive on growth and carcass while moderate on BW.
- Traditional colored female that will add value to any program.



CBD VISTA GIRL X008 - Lot 18

Consigned by: L & C Farms, New Market, IA

CBD VISTA GIRL X008



BD: 3/9/2010 Cow ?73409 Tat: CBD X008 Polled Purebred

VISTA 11L E530 P588
PB56317 VISTA ULTIMA 45Z E530 ET

VISTA BASIC BEEF ET

SILVER BULLET 5549
4Z CHLOE PLD ET
BELL RULE BRG U400
NORTHBRIDGE LESLIE ET B6301

EPDS
BW
-0.8
WW
4
YW
13
MILK
-6

CBD FORESURE U818
PB67129 PFI SMOOTH LASS N306

PFI BOX CAR R521

MR PELLA OF PFI K005
MISS MATTIE OF PFI E518
GLB POLLED PLUS 5003 (NC) ET
PFI TANNA BANANA L144

➤ **Sells Open**

- Sired by the low-birth weight calving ease Sire, "Vista P588", who is making his mark in the Brink Livestock program.
- Note the tabulation on this heifer with proven highly popular gene pools that include "Silver Bullet", "U400", "K005" and "Polled Plus".
- Dark colored heifer that will increase in value each and every day you own her with curve-bending EPD expression on BW and YW Growth.





RISS - Sire of Lot 19

Consigned by: MJ Cattle Company, Encampment, WY



MISS MJ 12 ET

BD: 2/21/2010 Cow PB74105 Tat: MJ MJ12 Horned Purebred

RISS (NC) FABIAN 9937-11
SI10

RISS 5901-41 FISCENTHAL
FRANZISKA 7929-11 HIMWIL

ROEBI 6947-175 SCHWELLBRUNN
BERNA 4990-294 OBERRIET
PARLI1877-716 FALLANDEN
FINELI 7334-11 HIMWIL

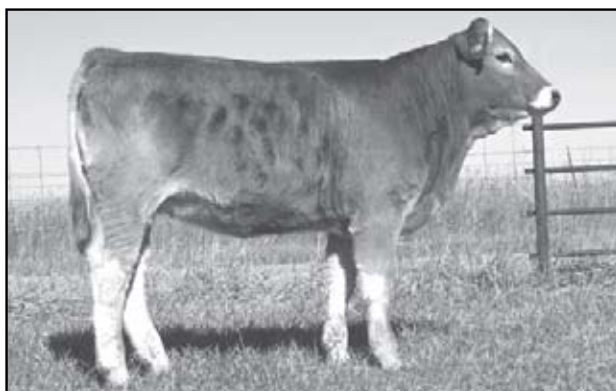
EPDS
BW
-0.1
WW
2
YW
-3
MILK
-1

ADMIRAL (NC) PINO 6832-43
MISS GOLDEN LINK 2604
AS5051 MS SCF SAMBO 54T ET

PASSGAL 5995-200 LEHN
AETU 4906-26 RICHTENSWIL
SAMBO (NC) JORDI 8240-94
SWISS-WAY RITA

➤ Sells Open

- Foundation genetics that provide a unique and valuable opportunity to acquire an own daughter of "Riss" out of an "Admiral".
- This ET heifer blends the best of time tested genetics many of which have built the breed.
- She had a 205-Day WT 584# and an actual BW 89#
- Her Donor Dam has left her mark as a top producer and gives this heifer the credentials to become a great one.



PFI POLLED BOBBIE X006 - Lot 20

Consigned by: Pella Farms Inc., Adams, NE



PFI POLLED BOBBIE X006

BD: 3/9/2010 Cow PB73978 Tat: PFI X006 Polled Purebred

PFI NITE TIME R513
PB55554

GLB POLLED PLUS 5003 (NC) ET
PFI COVERGIRL N342

E L CONQUISTADOR
MISS CJM Z011
PFI FIRST EDITION L125 ET
MISS MATTIE OF PFI G724

EPDS
BW
0.6
WW
7
YW
22
MILK
-1

MR BBS D417 ET
MISS BOBBI OF PFI G710
PB23181 MISS SAMIRAL OF PFI B228

BBS Z005 ET
MISS BBS - A1156 ET
GOLDEN LINK 937
PFI MISS SAMBO U625

➤ Sells Open

- This is truly a rare opportunity to acquire your piece of the "Bobbie" cow family that has been instrumental in the Mystic Hill, Broken Oak and Mike Long programs in recent years.
- She is a daughter of the low-birth weight Sire, "Nite Time", and a direct daughter of "Miss Bobbi G710" who has been one of the great cows in the Pella Program with a progeny weaning ratio of 101 on 11 calves.
- This Polled heifer expresses positive EPD growth and carcass values while blending that with longevity and maternal power.
- She represents your opportunity to own a female from the heart of the Pella Program and breed leading Braunvieh Genetics.





RCB ASPEN X006 - Lot 21

Consigned by: **Rock Creek Braunvieh, Fairbury, NE**

RCB ASPEN X006



BD: 3/1/2010 Cow PB72199 Tat: RCB RCB Polled Purebred

ADMIRAL (NC) PINO 6832-43
S153

PASSGAL 5995-200 LEHN
AETU 4906-26 RICHTENSWIL

PRINZ 8713-27 SCHOENENBERG
GUARDA 6334-226 GOSSAU SG
MALZER 5173-118 TRACHSLAU
BALINA 2810-46 BURGHALDEN

EPDS
BW
1.8
WW
0
YW
5
MILK
1

MISS RCB N352 ET
PB47527 MS ALEX F88

WAV RUMBLES 103L

KEYS IDOL 402F PLD ET
LONE STAR AMY 121H ET
ER-TIMOTHY 442A
ALEX B119

> Sells Open

- > A unique and valuable opportunity to acquire an own daughter of Imported "Admiral" from a proven high producing dam.
- > DNA verified this natural Polled heifer is a maternal sister to the many time Champion RCB Black Raider S603 and RCB Olive.
- > Her productive dam records a progeny WR of 3 @ 101 and comes to the top of the RCB program. "Aspen" recorded an actual BW 88# and an impressive 205-Day WT 604#.
- > Rock Creek Braunvieh reserves the right to flush this great female at their expense and the buyer's convenience after she reaches production age.



MS DLT 026 - Lot 22

Consigned by: **Thernes Braunvieh, DeWitt, NE**

MS DLT 026



BD: 3/18/2010 Cow PB74520 Tat: DLT 026 Polled Purebred

MR DLT 205
PB48064 MS DLT 956 DURABLE LADY

POLLED BLACK FLASH ET
MS DLT 956 DURABLE LADY

RCB BLACK UNO ET
MIDNIGHT DREAM
DURABLE JERRY ET
MISS POLLED EAGLE E516 ET

EPDS
BW
-3.6
WW
-18
YW
-23
MILK
-2

MS DLT 052 JENNA
PB37230 MISS POLLED EAGLE E516 ET

DURABLE JERRY ET

U LAZY U DCB JEROME A122 ET
MELEDE UELI HESTER 10T
GLB POLLED EAGLE
MISS ROCK CREEK W712

> Sells Open

- > This Polled show heifer prospect is an own daughter of the low-birth Breed Trait Leader, "MR DLT 205", and sibling to numerous Denver Champions for the Thernes Program.
- > She offers the trouble-free low-birth genetic expression with an actual BW 71# and BWEPD of -3.6.
- > Double-bred to the legendary "Polled Eagle" she stems from the "W712" cow family, a cow that records 19 progeny with 100 weaning ratio and her dam who recorded 7 weaned at 102.
- > Well bred and well developed heifer that will grab the attention of the most discriminating judge.





MS DLT 010 - Lot 23

Consigned by: **Thernes Braunvieh, DeWitt, NE**

MS DLT 010



BD: 3/9/2010 Cow PB74521 Tat: DLT 010 Scurred Purebred

POLLED BLACK FLASH ET

RCB BLACK UNO ET

EPDS

MR DLT 205

MIDNIGHT DREAM

BW

PB48064

MS DLT 956 DURABLE LADY

DURABLE JERRY ET

-1.9

DURABLE JERRY ET

MISS POLLED EAGLE E516 ET

WW

MS DLT 058 QUEEN ANNE

U LAZY U DCB JEROME A122 ET

-8

PB37233

MISS ROCK CREEK W712

MELEDE UELI HESTER 10T

YW

GRANAT (NC) MAX 14238-21

-15

PFI MISS SAMBO 10

MILK

-4

> Sells Open

- > This show heifer/brood cow prospect is a Grand Daughter of the great "W712" cow that left her mark on the breed with notable top-producing females and sons with a weaning ratio of 19 progeny at 100 following in her mother's production, PFI Miss Sambo 10, who recorded 7 weaned at 102.
- > Sired by the low-birth Breed Trait Leading "MR DLT 205", who is well known for his black progeny that have captured the purple at Denver as well as other major shows around the country.
- > Actual BW 76# with a -1.9 BWE PD and comes from the top-cut of replacements with a 205-Day WT of 564# to Ratio 102.



WCCR SHINNING STAR 020 - Lot 24

Consigned by: **Wolken Cornerstone Cattle, Mendenhall, MS**

WCCR SHINNING STAR 020



BD: 2/26/2010 Cow ?74062 Tat: WCCR 020 Polled Purebred

MR GOLDEN LINK 6193ET

SAMBO (NC) JORDI 8240-94

EPDS

MR GOLDEN LINK 4007

FORELLE 9708-5

BW

OB53208

MISS GOLDEN LINK 8709

MR GOLDEN LINK 5165 ET

-0.1

MISS GOLDEN LINK 6058 ET

WW

MR RCB K009

RCB BLACK UNO ET

2

WOLKEN'S MISS 330

MISS RCB FABIAN D440

YW

PC49735

MISS GOLDEN LINK G7903

MULTIPLE SIRES

2

ANGUS COW

MILK

2

> Sells Open

- > This Polled heifer blends the best of "Spittin Image", "Gold Nugget" and "Black Uno" into a wide based, deep sided show heifer/brood cow prospect.
- > Positive growth expression in this heifer that displays moderate BW with an actual 88# BW and -0.1 BWE PD.





WCCR GLORIA 9108 - Lot 25

Consigned by: **Wolken Cornerstone Cattle, Mendenhall, MS**



WCCR GLORIA 9108

BD: 5/24/2009 Cow PB71891 Tat: WCCR 9108 Polled Purebred

MR GOLDEN LINK 4007
OB53208

MR GOLDEN LINK 6193ET
MISS GOLDEN LINK 8709

MISS GOLDEN LINK 4601
PB50653

GLB POLLED PLUS 5003 (NC) ET
MISS GOLDEN LINK 7850

SAMBO (NC) JORDI 8240-94
FORELLE 9708-5
MR GOLDEN LINK 5165 ET
MISS GOLDEN LINK 6058 ET

E L CONQUISTADOR
MISS CJM Z011
GLB POLLED PLUS 5003 (NC) ET
MISS GOLDEN LINK 3504 ET

EPDS
BW
-1.7
WW
1
YW
2
MILK
1

- **Sells AI Bred 9/12/10 to AAA Woodring's Ranger 11R, pasture bred 9/26/10-11/26/10 to WCCR Maximum 8128.**
- From a Sire who blends "Spittin Image" and "Gold Nugget" out of a dam that is double-bred "Polled Plus", time-tested proven bloodlines that many herds have been built upon.
- She posted a 75# actual BW and a BWE PD of -1.7 while blending positive growth and carcass EPD strength to make her a well balanced and valuable future brood cow.
- Polled genetics at their best.

NATIONAL WESTERN[®] Stock Show

Denver Braunvieh Schedule

Cattle Arrive

Monday, January 10th

Sale Time

Wednesday, January 12th – 9:00 A.M. (MT)

Show Time

Wednesday, January 12th – 1:00 P.M. (MT)





MISS PREMIUM PLUS PFI P434 - Dam of Lots 26A and 26B



Consigned by: Mystic Hill Farm, Culpeper, VA

GUARANTEED HEIFER PREGNANCY

Purebred

MHF R595
PB56763 BNL PURE CHROME 6901F
MHF M230 ET

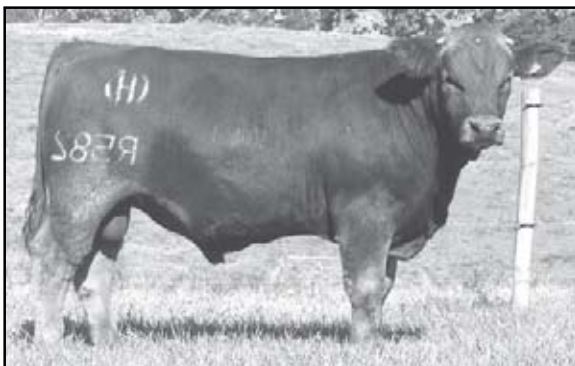
GLB POLLED EAGLE
MISS GOLDEN LINK 1516
MR GOLDEN LINK 6193ET
MISS LIFELINE K0020 ET

SIRE	DAM
BW	BW
-5.2	2.7
WW	WW
-8	19
YW	YW
-10	38
MILK	MILK
2	0

MISS PREMIUM PLUS PFI P434
PB51364 GLB POLLED PLUS 5003 (NC) ET
PFI POLLED BOBBIE F614

E L CONQUISTADOR
MISS CJM Z011
MR BBS D417 ET
MISS SAMIRAL OF PFI B236

- **Selling Choice of Lot 26A or 26B. Guaranteed Heifer Pregnancy including Recip.**
- Sired by the Breed Trait Leading Low-Birth Sire, "R595", who has been well documented and proved as a heifer bull in the breed. He blends "Pure Chrome" with "Spittin Image" and is a Grandson of the Breed Leading Donor, "Lifeline",. "R595" is the sire of the \$16,500 MHF U861, who topped the 2010 National Sale and now resides as Senior Herd Sire at Yates Braunvieh, TX and MHF Pure Country U8149 who topped the Fall '09 Mystic Hill Bull Sale, selected by Tyler Long and C-Farms.
- The Donor Dam is the well known Homozygous Polled, Miss Premium Plus PFI P434, who has recorded 31 progeny with a weaning ratio of 103 and has already left a legacy of sons and daughters working throughout the country.
- Maternal sibs to this pregnancy include MHF Synergy S627 and National Champion MHF Unity U854.
- Pregnancy will be 90 days bred upon delivery.



MHF R582 ET - Sire of Lot 26B



Consigned by: Mystic Hill Farm, Culpeper, VA

GUARANTEED HEIFER PREGNANCY

Purebred

MHF R582 ET
PB56753 MR GOLDEN LINK 6193ET
MHF P VIRGINIA M215 ET

SAMBO (NC) JORDI 8240-94
FORELLE 9708-5
RCB MR SLATE ET
MISS LIFELINE K0020 ET

SIRE	DAM
BW	BW
1.0	2.7
WW	WW
8	19
YW	YW
16	38
MILK	MILK
5	0

MISS PREMIUM PLUS PFI P434
PB51364 GLB POLLED PLUS 5003 (NC) ET
PFI POLLED BOBBIE F614

E L CONQUISTADOR
MISS CJM Z011
MR BBS D417 ET
MISS SAMIRAL OF PFI B236

- **Selling Choice of Lot 26A or 26B. Guaranteed Heifer Pregnancy including Recip.**
- Sired by "R582" who is a full brother to MHF Genesis T737", the top indexing and top selling bull at the 1st National Braunvieh Bull Test Sale in Manhattan, KS., in 2007 as well as MHF Tina T733 who sold in the inaugural Elite Braunvieh Roundup Sale in Louisville, KY. "R582" was the top selling Braunvieh bull in the November 2006 Mystic Hill Bull Sale and has built an impressive legacy of progeny.
- The Donor dam is the well known Homozygous Polled "Premium Plus P434" who has recorded 31 progeny with a weaning ratio of 103 and has already left a legacy of sons and daughters working throughout the country.
- Maternal sibs to this pregnancy include MHF Synergy S627 and National Champion MHF Unity U854.
- Pregnancy will be 90 Days bred upon delivery.





Spittin Image - Sire of Lot 27

Consigned by: Bagley Farms, Cohutta, GA

4 GRADE 1 EMBRYOS



Fullblood

MR GOLDEN LINK 6193ET
 OB13393 SAMBO (NC) JORDI 8240-94
 FORELLE 9708-5

SW2455-785 BIBEREGG
 LOTTI 20044-97 KUSSNACHT
 GOLD 7175-23 OBERAMT
 FINETTE G5

SIRE	DAM
BW	BW
0.5	0.3
WW	WW
13	12
YW	YW
16	23
MILK	MILK
8	-4

JF NANCY P426
 OB53571 TENNESSEAN (NC) ET
 MISS JF NANCY H821

NORTHSTAR VERNON AEB53A-6252
 BETHLI 8618-94
 SILVERWOOD DRAGON 4Y
 MISS ADT 5114E ET

➤ Selling 4 Grade 1 Embryos

- An exceptional opportunity to acquire the proven and time-tested genetics of "Spittin Image" and the influence of a breed great in "JF Nancy H821".
- "Spittin Image" has and is still providing a legacy of top-performing progeny throughout the country. He has recorded 274 progeny from 54 herds with an average WWR of 101, 103 YW ratio on 23 head, 21 progeny with a 103 Marbling ratio and 20 progeny with an average 100 ratio. Proven value from all traits.
- The Donor dam was a top pick in the 2009 Southeast Braunvieh Connection Sale and is a maternal sister to the highly regarded JF Gage L103. The Grand Dam, Nancy H821, has recorded an impressive production record with 9 weaned at 103 ratio.



FR Trademark T759 ET - Maternal sister to Lot 28

Consigned by: The Freeman Ranch, Yoder, CO

3 GRADE 1 EMBRYOS



Purebred

BNL PURE CHROME 6901F
 PB14477 GLB POLLED EAGLE
 MISS GOLDEN LINK 1516

E L CONQUISTADOR
 MISS CJM 2011
 GLB SAM 627 ET
 YELLOW ROSE MISTY

SIRE	DAM
BW	BW
-3.0	0.7
WW	WW
-2	5
YW	YW
-9	8
MILK	MILK
-5	-3

MISS LULU OF PFI G838
 PB22150 EL MATADOR PFI C305 ET
 MISS SAMIRAL OF PFI D442

E L CONQUISTADOR
 MISS GLB "MERCEDES" 1588
 GOLDEN LINK 937
 PFI MISS SAMBO U615

➤ Selling 3 Grade 1 Embryos

- A rare and unique opportunity to acquire direct progeny of the low-birth Breed Trait Leader "Pure Chrome" from the powerful "El Matador" daughter, Miss Lulu of PFI G838.
- "Pure Chrome" semen is highly valuable and scarce bringing as much as \$1,350 per unit in the 2009 National Braunvieh Sale. "Pure Chrome" is well established as one of the breed's most respected low-birth Sires and for highly productive and functional daughters.
- The Donor Dam has been a prolific and top-producing daughter of the legendary "El Matador" and stems from the highly regarded "Samiral" cow family in the Pella program. She has recorded an impressive production record that includes 4 progeny weaned with a 101 ratio.
- These embryos will be maternal sibs to FR Trademark T759 who was the Grand Champion Female at the '09 Tulsa State Fair, Houston and Ft. Worth shows and the 2009 Res. Grand Champion Show Heifer of The Year.





TML Silverado 108S - Sire of Lot 29A



BNL Bonina Phenomenon - Clone to the dam of Lots 29A & 29B

Consigned by: MJ Cattle Co., Encampment, WY

4 GRADE 1 EMBRYOS



Purebred

TML SILVERADO 108S
PB60577 SS DOUBLE EAGLE 652 ET
WTR NUTTER BUTTER 108N

GLB POLLED EAGLE
MISS DTS A162
WTR HIPCHECK 123H ET
WTR LOLLIPOP 56L ET

SIRE	DAM
BW	BW
0.3	0.7
WW	WW
23	4
YW	YW
36	18
MILK	MILK
-3	-1

MISS BOR C PHENOMENONZWEI ET
PB67844 SILVER BULLET 5549
MISS SAMIRAL OF PFI C340

GLB POLLED EAGLE
MISS GOLDEN LINK 2528
GOLDEN LINK 937
PFI MISS SAMBO X816

➤ **Selling Choice Of Lot 29A or 29B, 4 Grade 1 Embryos**

- A unique and valuable opportunity to acquire embryos from the \$20,000 valued clone of BNL Bonina Phenomenon.
- Miss BOR C Phenomenonzwei has been a prolific donor for MJ Cattle Co. and Broken Oak Ranch. She displays and transmits the power of her legendary clone unlike any other female in the breed.
- The mating to "Silverado", combines "like kind" genetics with power and substance. "Silverado" was the 2007/2008 National Show Bull Of The Year and not only provides flawless phenotype but breed leading genetic expression with his EPD footprint.

Consigned by: MJ Cattle Co., Encampment, WY

4 GRADE 1 EMBRYOS



Purebred

MHF T719
PB61546 MCB MR 5003 A518R
BODINE'S R39

GLB POLLED PLUS 5003 (NC) ET
MCB MISS 14N
WAV VALENTINO 104M
MISS FMF FRANZISKA H802

SIRE	DAM
BW	BW
-4.0	0.7
WW	WW
-8	4
YW	YW
4	18
MILK	MILK
-1	-1

MISS BOR C PHENOMENONZWEI ET
PB67844 SILVER BULLET 5549
MISS SAMIRAL OF PFI C340

GLB POLLED EAGLE
MISS GOLDEN LINK 2528
GOLDEN LINK 937
PFI MISS SAMBO X816

➤ **Selling Choice of Lot 29A or 29B, 4 Grade 1 Embryos**

- The second opportunity to acquire embryos from the \$20,000 valued clone of BNL Bonina Phenomenon.
- This mating is to the Homozygous Polled MHF T719, "Smoothie", who was selected by and working in the JHL Ranch program in Nebraska.
- "Smoothie" has begun to produce an impressive record exhibiting low-birth genetics with a 72# actual BW and -4.0 BWE PD. His performance sets him apart with a 1.37 REA/CWT and a 4.6 IMF score.





MILE HIGH SHOW PREMIUM JUNIOR PROGRAM

Heifers purchased in the 2011 Mile High Braunvieh Sale will qualify for the opportunity to receive a *Show Premium* from the consignor for the 2011 calendar year show season. January to December 2011.

Shows that qualify are the 2011 Ring Of Excellence Shows and 2011 Junior National Show.

A heifer purchased in the Mile High Sale will be awarded the following cash premium for;

Grand or Res. Grand Champion - \$500.00

Division Grand or Res. Grand - \$250.00

Class Winner - \$100.00

This applies to just one show in the 2011 season and only the highest placing will be paid.

To Qualify:

- 1. Heifer must be purchased by a member (in good standing) of Junior Braunvieh Association of America.**
- 2. Heifer must be transferred to the ownership of the Junior buyer and ownership may not change again for the 2011 year.**
- 3. Junior is responsible for notifying the consignor and must supply the breeder with a picture taken at the show.**

Notes



Consignors Index



Big Blue Braunvieh

Jeff & Jason Zimmerman
15677 S. 38th Road
Pickrell NE 68422
402/223-8367
Lots 4 & 5

Blue Feather Ranch

Kent & Danny Garrett
PO Box 258
Kiowa CO 80117
303/521-2281
Lots 6A, 6B & 7

Brink Livestock

Bob & Marilyn Brink
765 80th Road
Piedmont KS 67122
620/583-5226
Lot 8

C-Farms

Todd Clubb
6036 31st Avenue
Vinton IA 52349
319/330-3590
Lots 9 & 10

Diamond N Braunvieh

Mark Nelson
1406 Highland Road
Hastings NE 68901
402/705-3907
Lot 11

Double R Ranch

Robert & Roseanne Segarra
3215 Y Road
Hill City KS 67642
785/421-2283
Lots 1A & 1B

End Of Road Ranch

Mike Kalb
25905 Hwy 59
Yuma CO 80759
970/630-2609
Lot 12

The Freeman Ranch

Russell Freeman
38805 Myers Road
Yoder CO 80864
719/338-3344
719/338-5071
Lots 13, 14 & 28

Harvester Farm

Bethany Johnson
13624 Newbys Shop Road
Remington VA 22734
540/905-5541
Lot 2

H & E Braunvieh

Harland Rupp
232 NW 100 Road
Hoisington KS 67544
620/653-9935
Lots 15 & 16

J-D Farms

Jerrad Hurley
41689 US Hwy 77
Wymore NE 68466
402/239-1417
Lot 3

L & C Farms

Leonard Schafer
2813 Colt Avenue
New Market IA 51646
712/585-3668
Lots 17 & 18

MJ Cattle Company

Mark & Jennifer Peterson
PO Box 338
Encampment WY 82325
307/761-3331
Lots 19 & 29A, 29B

Mystic Hill Farms

Tommy Clark
12227 Mystic Hill Lane
Culpeper VA 22701
540/937-0029
Lots 2 & 26A, 26B

Pella Farms Inc.

Dave & Judy Doeschot
RD 1 Box 85
Adams NE 68301
402/788-2250
Lot 20

Rock Creek Braunvieh

Kendall Schlake
71310 570th Avenue
Fairbury NE 68352
402/300-0745
Lot 21

Thernes Braunvieh

Dean & Tammy Thernes
55016 Half Mile Road
Norfolk NE 68701
402/640-6486
Lots 22 & 23

Wolken Cornerstone Cattle Co.

Mark Wolken
511 Marsha Ave
Mendenhall MS 39114
601/953-7573
Lots 24 & 25





BRUBAKER

Sales & Marketing LLC

5815 N. Valley Pike
Harrisonburg, VA 22802

First Class
US Postage
PAID
Boelte-Hall, Inc.
66205

FIRST CLASS MAIL

